

# Support Process Document

**Purpose:** Explain how to set Encryption Mode and Key on iVoice Configuration and AS/400

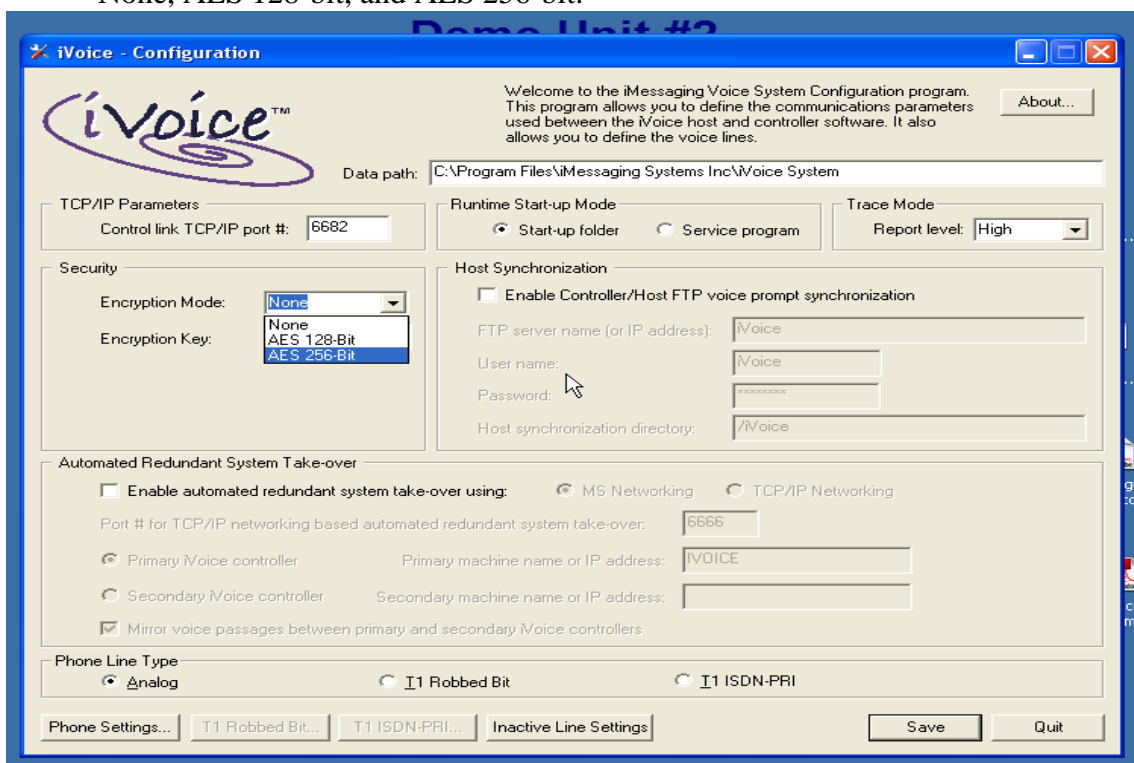
Document Revision Control			
Revision	Date	By	Changes
-	24-Dec-08	B. Ankuda	Document created
	24-Jan-09	B. Ankuda	Document format modified

To setup the encryption the iVoice lines must inactive.

1. From the System i Application, end the iVoice jobs (if they are running):
  - a. Ensure the dispatcher is running. If not, start the dispatcher (iVoice Main Menu #5)
  - b. End the lines / unit (iVoice Main Menu #2) by selecting E to end.

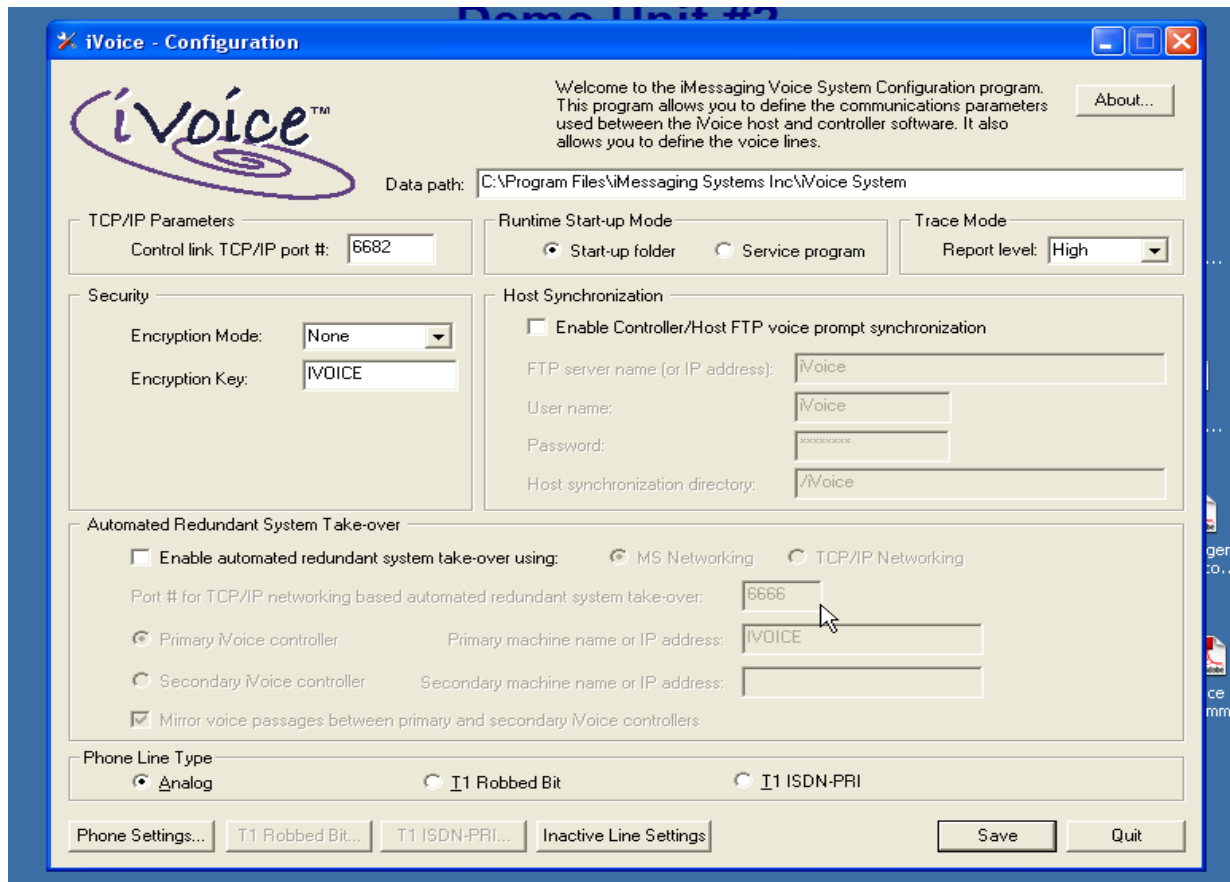
## Setting the Encryption Mode for iVoice configuration

2. Open the iVoice Configuration located on the iVoice Controller.
3. Choose the Encryption mode from the drop down menu. Your options being None, AES 128-bit, and AES 256-bit.



## Setting the Encryption Key for iVoice configuration

4. Below the Encryption Mode drop down box is the Encryption Key text box. Type in the Encryption Key of your choice. Your options for characters are letters and numbers.
5. After you have chosen the Encryption mode and set an Encryption Key, click the save button, followed by the quit button to exit the window.



## Setting the Encryption Mode on the System i

6. Once Encryption is set in the iVoice Configuration, it has to be set on the System i as well. Go to the iVoice menu on the System i.
7. Enter option 2 (work with iVoice Units). Once working with iVoice Units you will input option 2 (Update) next to the unit you are using.
8. In the highlighted “Encryption Mode” field below is where you will choose your encryption mode.
9. The options will be “0” for none, “1” for AES 128-bit, and “2” for AES 256-bit.
10. Input one of these options then hit enter to change the value on the System i. A confirmation message in white text will show up in the bottom left hand side of the screen.

```
Work with iVoice Units
Type options, press Enter.
 1=Add  2=Update 3=Copy 4=Delete 5=Display 6=Work with lines
.....
: Work with iVoice units - Update :
: : :
: Unit name: iv01 :
: : :
: Description: iVoice TestUnit :
: IP address: 0 :
: Encryption Mode: 2 (0=None, 1=128bit, 2=256bit) :
: Encryption Key: :
: Controller socket: 6682 :
: Driver socket: 6939 :
: : :
: : :
: F3=Exit F12=Cancel :
: Buffer length longer than record for member IVLINE. :
: : :
.....
F3=Exit F5=Refresh F12=Cancel
```

## Setting the Encryption Key on the System i

11. Once the Encryption Key is set on the iVoice configuration, it has to also be set on the System i. It has to be the same on both ends or else it will not work and will generate an error. In the picture below in the highlighted area is the “Encryption Key” field. To the right of that on the blank line is where you enter the same encryption key that you entered on the iVoice Configuration Encryption Key text box on the iVoice Controller.
12. Once you have entered the encryption key, hit enter for the key to take effect. In the bottom left hand corner a message in white text will confirm the Encryption Key has been successfully set.

```

Work with iVoice Units

Type options, press Enter.
 1=Add   2=Update  3=Copy  4=Delete  5=Display  6=Work with lines
.....
:                               Work with iVoice units - Update                               :
:                                                                                           :
:   Unit name:  iv01                                                                    :
:                                                                                           :
:   Description: iVoice TestUnit                                                         :
:   IP address:  0                                                                      :
:   Encryption Mode: 2  (0=None, 1=128bit, 2=256bit)                                   :
:   Encryption Key:  IVOICE                                                             :
:   Controller socket:  6682                                                            :
:   Driver socket:    6939                                                              :
:                                                                                           :
:                                                                                           :
:                                                                                           :
:   F3=Exit  F12=Cancel                                                                :
: Buffer length longer than record for member IVLINE.                                  :
:                                                                                           :
:.....
F3=Exit  F5=Refresh  F12=Cancel

```

13. Once your settings for Encryption have been changed. Reboot the iVoice Controller.
14. From the System i Application, start the iVoice jobs (if they aren't running):
  - a. Ensure the dispatcher is running. If not, start the dispatcher (iVoice Main Menu #5)
  - b. Start the lines / unit (iVoice Main Menu #2) by selecting S to start.